



*Total Solution Provider in Saw Device*

---

# SL06303BV

63.8MHz IF SAW Filter  
3.75MHz Bandwidth  
Revision 0 : 5. March. 2010



- Electrical Characteristics
  - Package Dimensions
  - Testing Environment
  - Frequency Characteristics
- 

**SAWNICS Inc.**

---

460 Cheonheung-ri, Seonggeo-eup, Cheonan-si, Chungcheongnam-do, 330-836 / Korea.  
Tel: +82 41 550 9372 / Fax: +82 41 550 9399 / [www.sawnics.com](http://www.sawnics.com)

## □ Electrical Characteristics

### Maximum Ratings

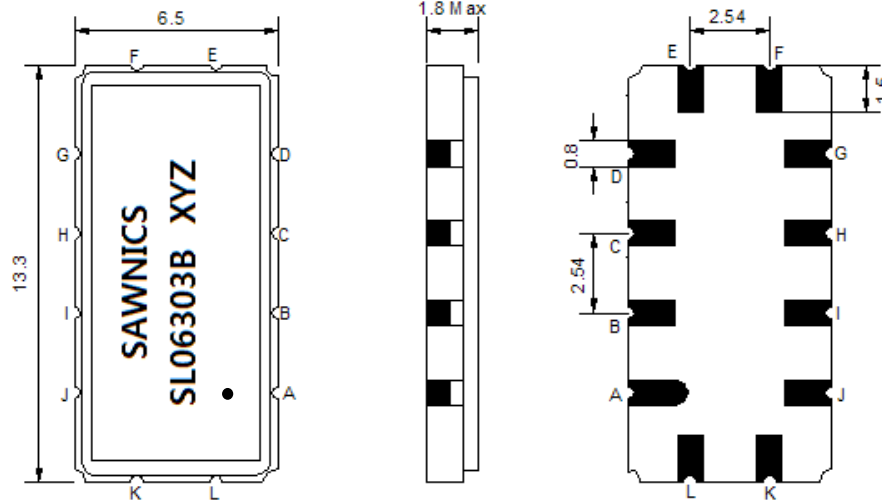
Parameters Description	Unit	Minimum	Typical	Maximum
Operating Temperature Range	°C	-5	-	65
Storage Temperature Range	°C	-40	-	85
Maximum DC Voltage	V	-	-	10
Maximum Input Power	dBm	-	-	10
Source Impedance (single ended) <sup>(1)</sup>	Ω	-	50	-
Load Impedance (single ended) <sup>(1)</sup>	Ω	-	50	-
Package type & size	V			
Length x Width	mm <sup>2</sup>	-	13.3 x 6.5	-
Height	mm	-	-	1.8

### Electrical Specification

Parameters Description	Unit	Minimum	Typical	Maximum
Center Frequency (Fo)	MHz	63.70	63.80	63.90
Insertion Loss at Fo	dB	-	13.50	15.00
Group Delay Variation (Fo±1.50MHz)	ns	-	37	80
Absolute Delay Time at Fo	us	-	1.67	-
Temperature Coefficient	ppm/°C	-	-18	-
Amplitude Ripple (Fo±1.50MHz)	dB	-	0.30	0.80
Bandwidth at -1dB	MHz	3.50	3.74	-
Bandwidth at -3dB	MHz	3.90	4.17	-
Bandwidth at -25dB	MHz	-	5.42	6.70
Bandwidth at -40dB	MHz	-	5.95	6.20
Ultimate Rejection	dB	45	50	-

**Notes :** (1) With Matching Network (Ref. Testing Environment Circuit as shown below).  
Those impedances could be modified with different impedance values and/or structures, if necessary.

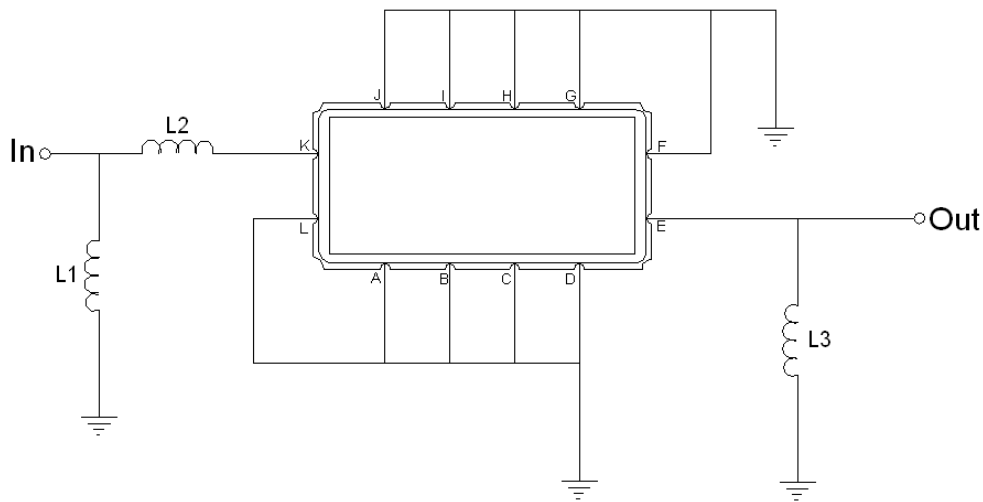
**Package Dimensions**



- ① SAWNICS: Brand
- ② SL06303B: Model Name
- ③ X : Date Code (Year)
- ④ Y : Date Code (Month)
- ⑤ Z : Date Code (Date)
- : Index Dot

Pin Description	
A, B, C, D, F, G, H, I, J, L	Ground
K	Input
E	Output

**Testing Environment**



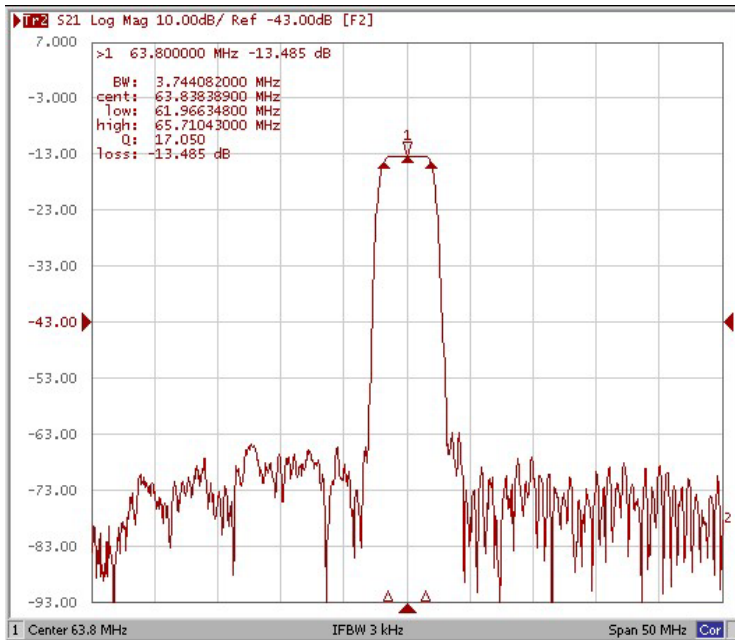
Test Fixture & Values	
Input	L1 = 68 nH, L2 = 12nH
Output	L3 = 56 nH,
Source/Load Impedance	50 Ω



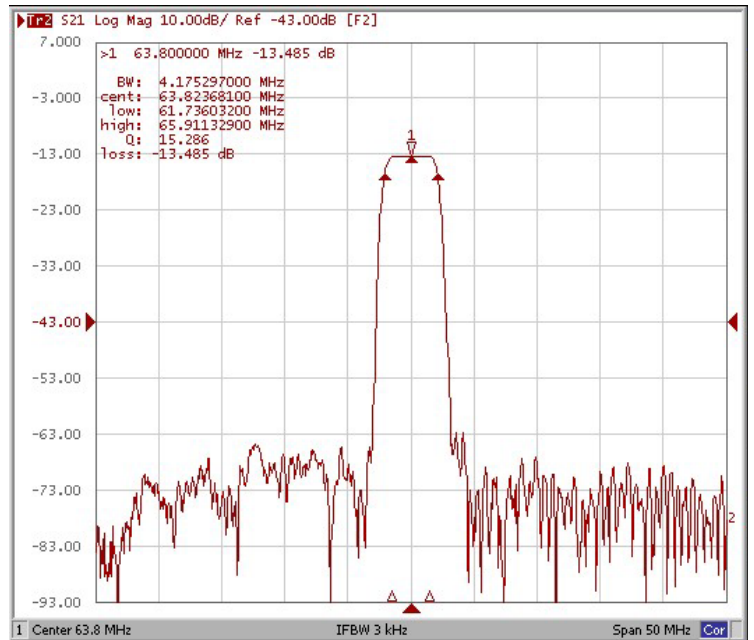
### Frequency Characteristics

#### Frequency Response

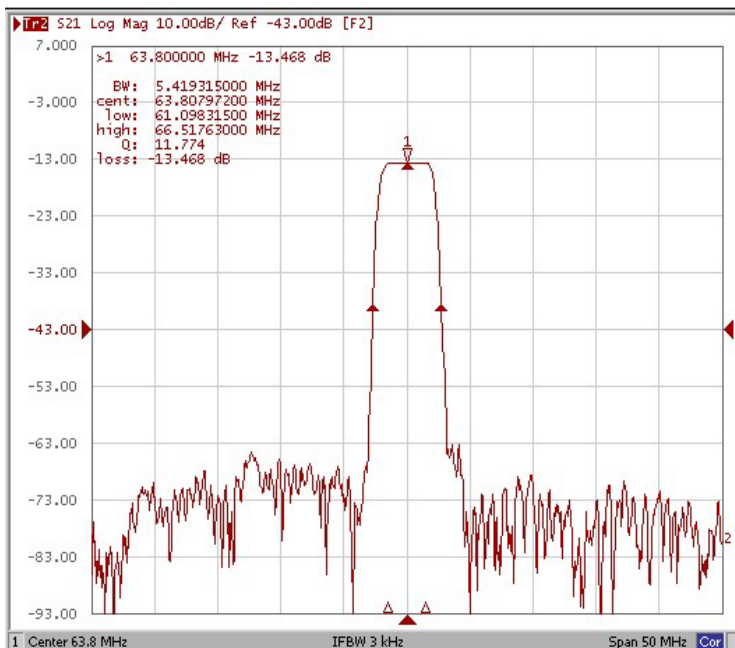
#### Bandwidth at -1.0 dB



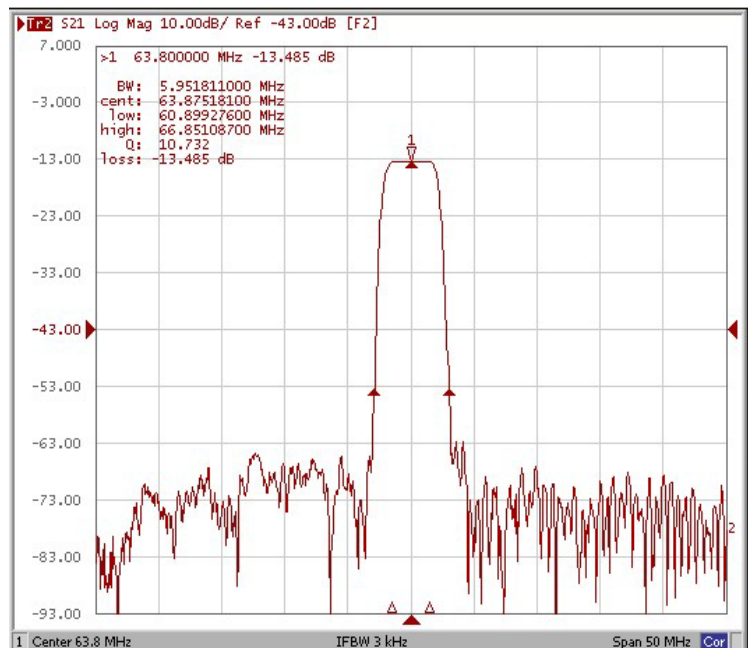
#### Bandwidth at -3.0 dB



#### Bandwidth at -25.0 dB



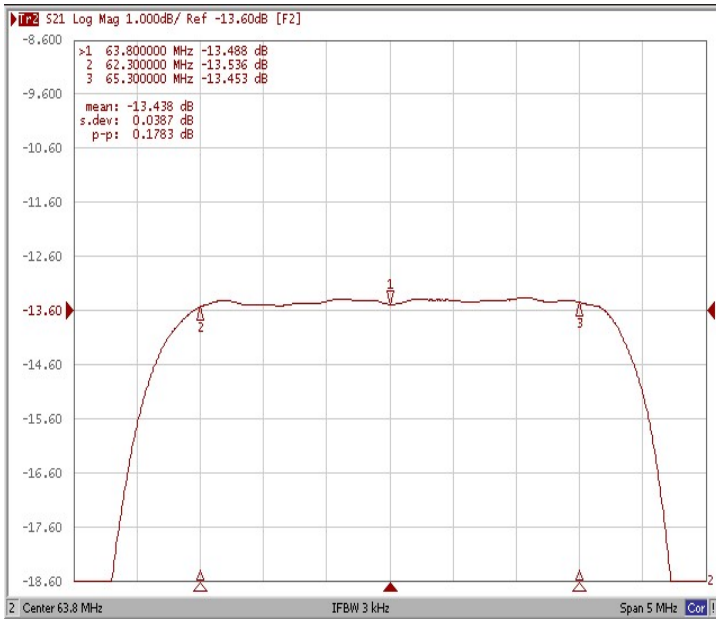
#### Bandwidth at -40.0 dB



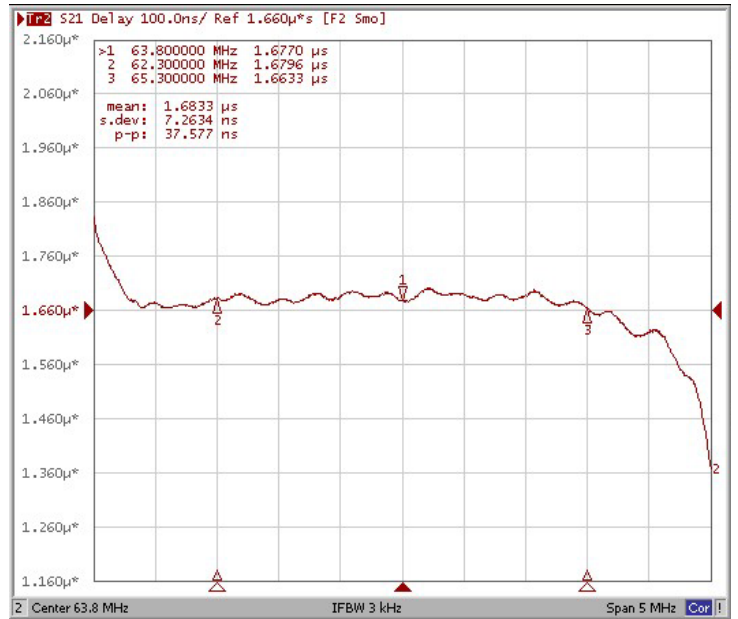
### Frequency Characteristics

#### Frequency Response

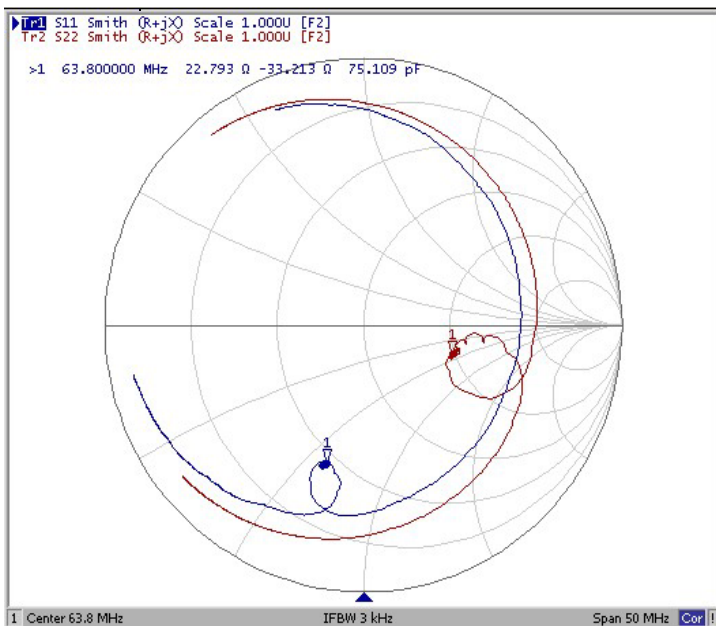
Ripple Variation  $F_o \pm 1.50\text{MHz}$



Group Delay Variation  $F_o \pm 1.50\text{MHz}$



Smith Chart



VSWR

